

# Supporting the implementation of NICE guidance

**Annie Coppel**  
**Implementation Consultant**  
**National Institute of Health and Clinical Excellence**  
**26 September 2012**

---

# What is NICE?

The National Institute for Health and Clinical Excellence (NICE) is the **independent** organisation responsible for providing national guidance on **the promotion of good health** and **the prevention and treatment of ill health.**



# The role of NICE

- To identify good clinical and public health practice using the best available evidence
- To help resolve uncertainty for the public, patients and professionals
- To reduce variation in the availability and quality of practice and care.
- April 2013 – social care guidance and standards also

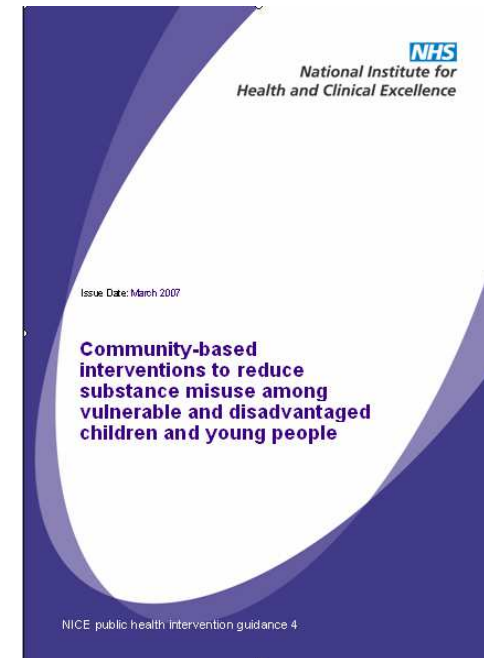


# A suite of NICE guidance 2007

- Clinical Guideline 51: Drug misuse: psychosocial interventions
  - identification and assessment of drug misuse
  - brief interventions and self-help
  - formal psychosocial interventions
  - choice of setting
- Clinical Guideline 52: Drug misuse: opioid detoxification
  - information, advice and support
  - pharmacological interventions
  - choice of settings for detoxification
  - specific psychosocial interventions.

# A suite of NICE guidance 2007

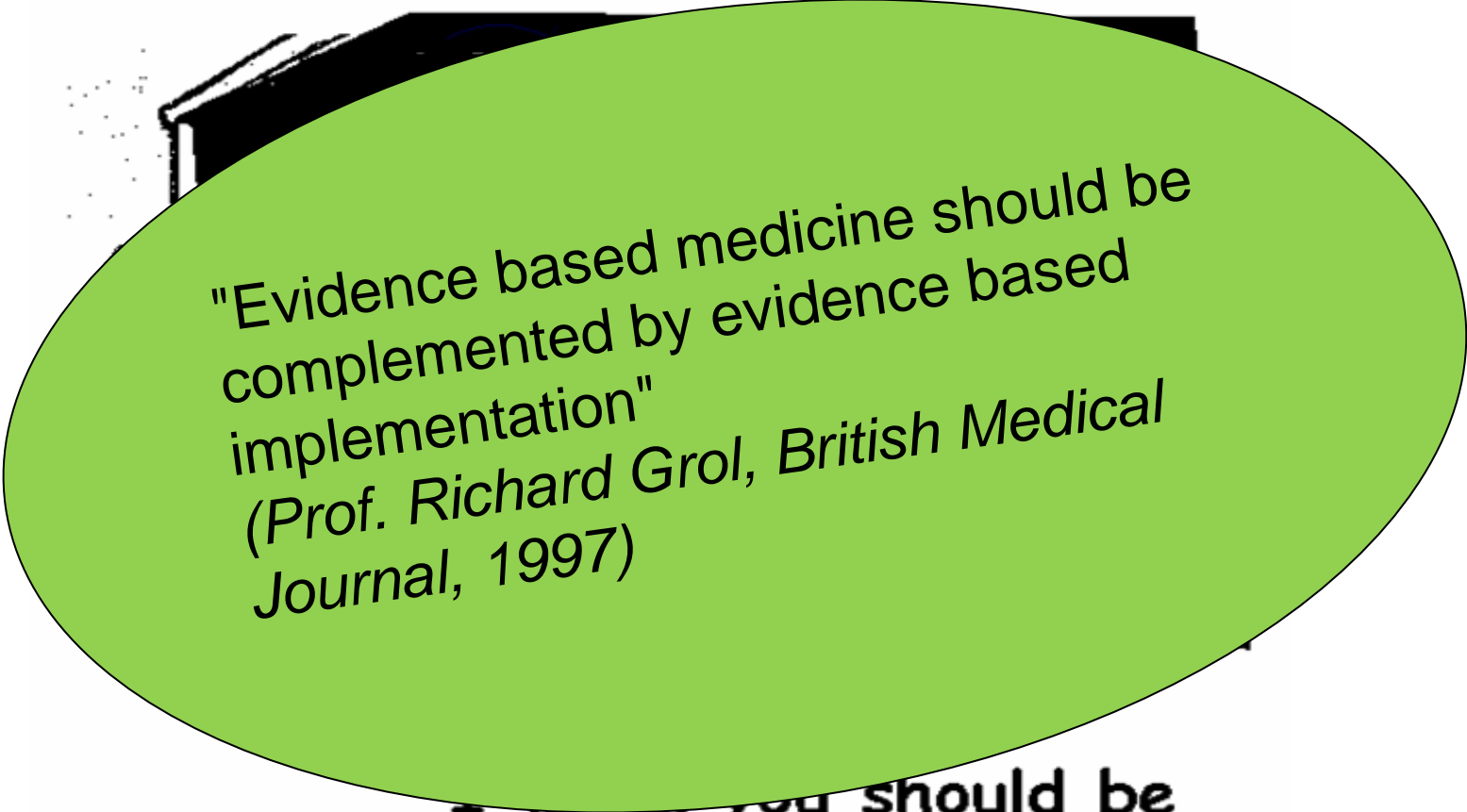
- Public Health Guidance 4: Interventions to reduce substance misuse among vulnerable young people
  - Technology Appraisals
    - TA114: Methadone and buprenorphine
    - TA115: Naltrexone
- .....for the management of opioid dependence



- Incorporates NICE guidance
- Independent expert group supported by National Treatment Agency for Substance Misuse (NTA)
- Marker of evidence-based practice
- Regulators will consider compliance
- Professional bodies will consider for clinical practice.



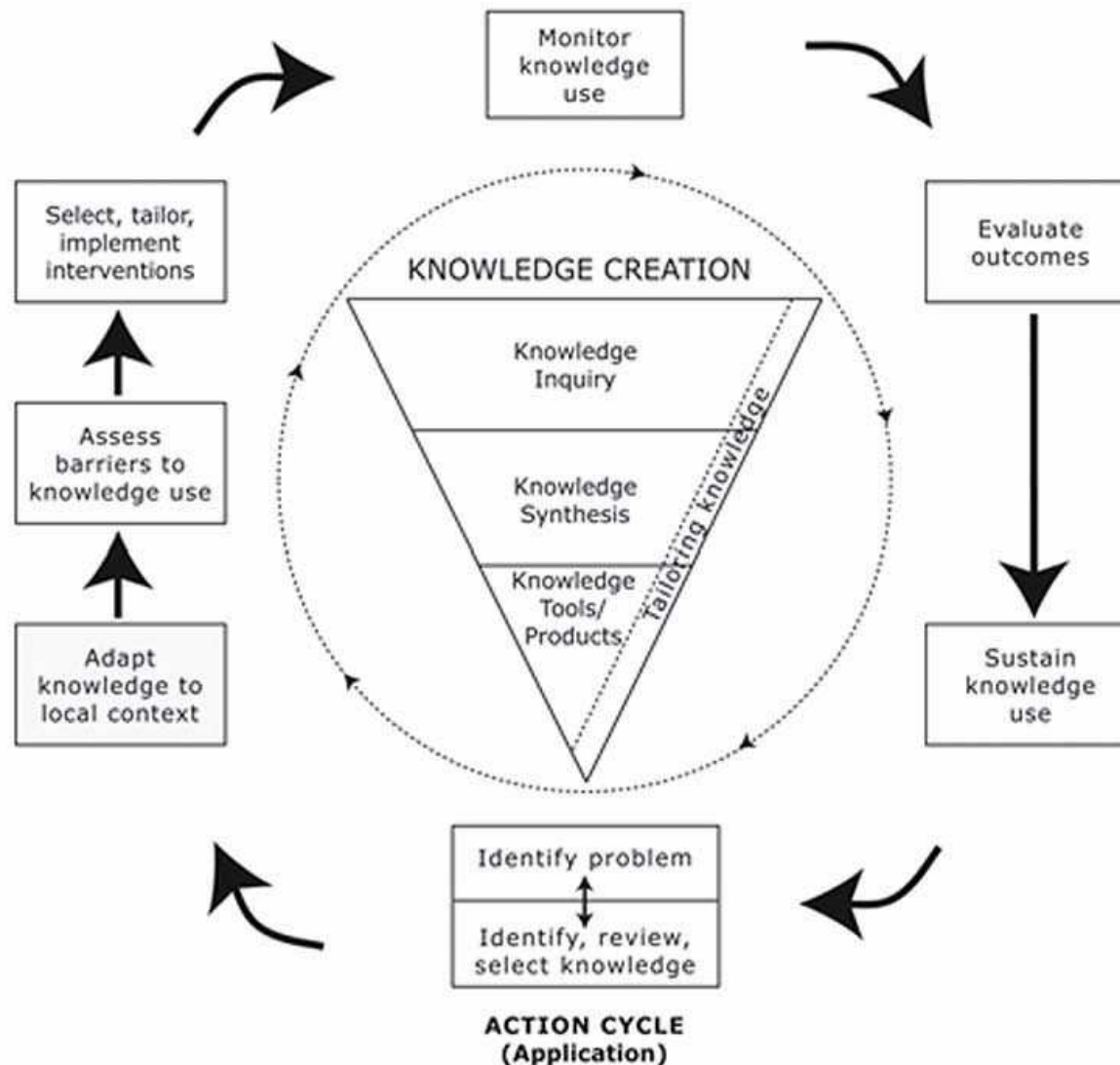
# The NICE Implementation Strategy v1



"Evidence based medicine should be complemented by evidence based implementation"  
(Prof. Richard Grol, *British Medical Journal*, 1997)

**...you should be  
more explicit here in step two."**

# Knowledge to Action Cycle



Graham ID et al. Lost in knowledge translation: Time for a map? *Journal of Continuing Education in Health Professions*, 2006



# Main barriers to implementation

- Structural
  - Organisational
  - Peer group
  - Individual
  - Limits of human processing
- 
- Adoption of evidence into practice depends ultimately on decisions to change made by individual people



# Continuum of approaches

Greenhalgh T, et al. *Milbank Quarterly* 2004; 82:581–629



Wide range of interventions that are effective under some circumstances, none effective under all circumstance

The key is to tailor implementation to assessed barriers, considering the known effects of interventions and available resources – but no magic bullet!

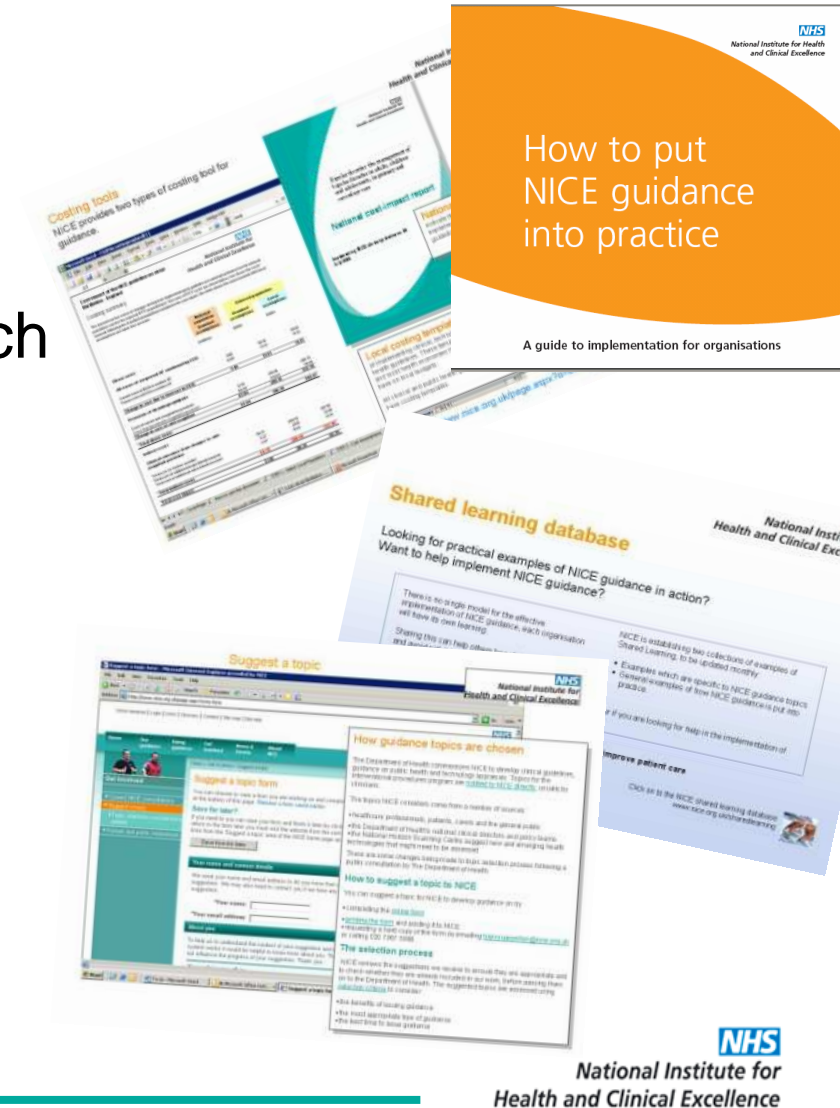
# The NICE Implementation Strategy



- Motivate and inspire
  - Key partners
  - Education initiatives
- System levers & incentives
  - Healthcare regulators
  - Quality improvement incentives
- Practical tools
- Evaluation

# Practical support for implementation

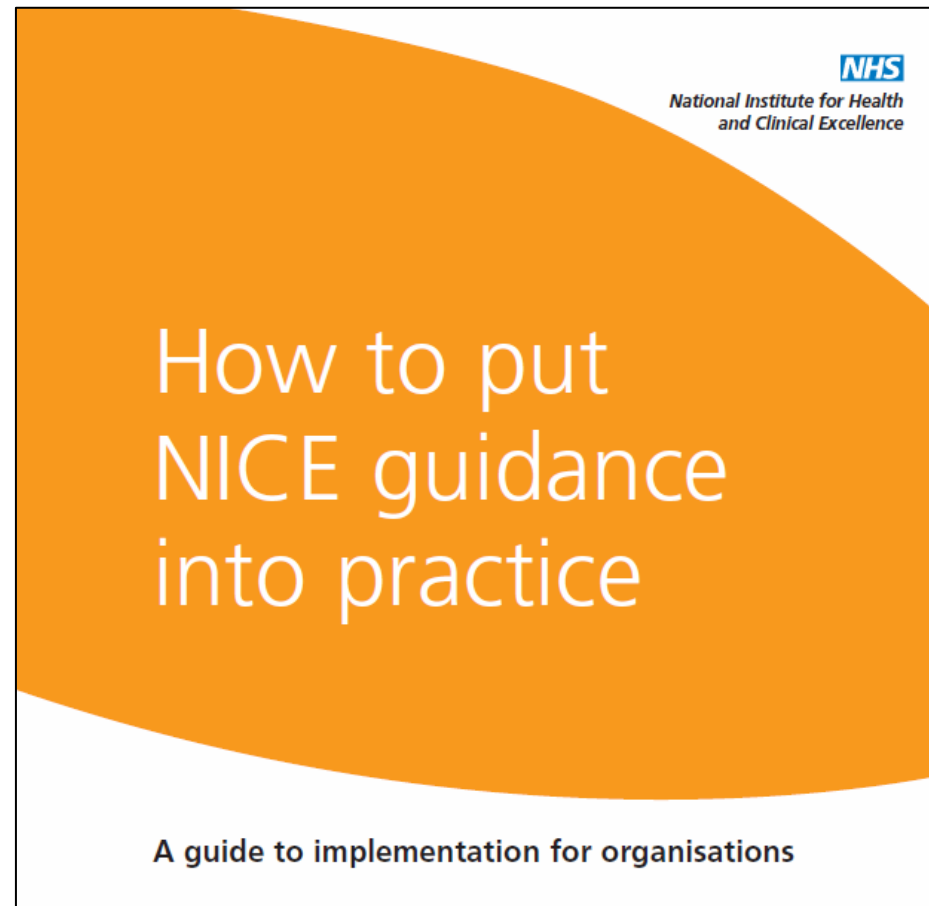
- Horizon scanning
- Help with a systematic approach
- Education
- Building a business case
- Measuring progress
- Sharing success



# Horizon scanning – Forward Planner

Status	Publication date / Earliest Anticipated publication date	Type of guidance	Guidance Number	Short title	Primary care	Impacts on payment by results	Funding considerations and other comments
In progress	Mar-10	Clinical guideline	<a href="#">CG94</a>	Unstable angina and NSTEMI	●	✓	Draft guidance is available on the NICE website. This guideline also updates TA47 and TA80. It is not anticipated that there will be a significant impact on resources.
In progress	Mar-10	Clinical guideline	<a href="#">CG96</a>	Neuropathic pain - pharmacological management	●	!	The remit for this guidance is the pharmacological management of neuropathic pain in adults, in non-specialist settings eg primary and secondary care excluding specialist pain management clinics.
In progress	Apr-10	Clinical guideline		Hypertensive disorders during pregnancy	●	!	The guidance relates to women who present with hypertensive disorders for the first time during pregnancy, women who have pre-existing hypertension and are planning pregnancy or are pregnant and women who are pregnant and at risk of developing hypertensive disorders. Pregnancy will include the antenatal, intrapartum and postpartum periods. The healthcare setting are primary care, including community midwifery settings, and also secondary care, including obstetric and general medical services. It is anticipated at this stage that the overall impact of the guideline will be cost saving.
In progress	Apr-10	Clinical guideline		Male lower urinary tract symptoms (LUTS)	●	?	Surgery for severe voiding symptoms may have some impact on PbR.
In progress	Apr-10	Clinical guideline		Neonatal jaundice	●	?	Topic recently referred and guidance is at an early stage of development - this section will be updated as more information becomes available.
In progress	Apr-10	Public health interventions		Preventing unintentional injuries among under 15s in the home	●	?	Each year in the UK unintentional injury results in more than 2 million visits to A&E departments by children. Half of these injuries occur at home and many are preventable.
In progress	Apr-10	Public health programme		Prevention of cardiovascular disease	●	x	Topic recently referred and guidance is at an early stage of development - Early indications are that activity is likely to be within primary and community care that is currently outside the scope of PbR.

# Systematic approach - working with guidance



# Education

- Slide sets
  - presenter notes
  - individual learning
  - facilitate team discussion
  - clinical case scenarios
- Online education tools
- Podcasts



# Build a business case - costing tools

## National cost impact reports

indicate the national estimated cost of implementing NICE clinical and public health guidelines.



**Local costing templates** support estimating the local cost of implementing clinical, technology appraisal guidance and public health guidelines. These templates allow individual NHS organisations and local health economies to quickly assess the impact guidance will have on local budgets.





# Measuring progress - audit tools



# Sharing success

- Top tips shared on implementing NICE guidance
- Searchable Shared Learning Database
- Recognising achievement – national annual awards, media coverage

2012 Winner	2012 Finalist	2012 Finalist
		
<b>Regional cooling service to reduce brain injury in newborn babies</b>	<b>Evidence-based services for alcohol use disorders in Manchester</b>	<b>New 'care bundle' on discharge from respiratory ward improves care for COPD patients</b>
<b>East of England Perinatal Networks and Cambridge University Hospitals NHS Foundation Trust</b>	<b>Manchester Mental Health and Social Care Trust</b>	<b>West Middlesex University Hospital</b>
A service to improve the quality of care for newborn babies with serious brain injury, which showed dramatically improved results for care after championing NICE's guidance on therapeutic hypothermia.	A new care pathway for alcohol use disorders was developed following an expansion of the Trust's services. The Pathway was based on NICE's guidance on alcohol use disorders to ensure that service users receive evidence-based care.	A 'care bundle' of four evidence-based interventions is developed for COPD patients being discharged, to reduce variation in care, improve patient experience and ultimately reduce re-admission rates.

# NICE pathways

1. To bring together related guidance, between and within topics
2. To link other products –  
To provide in a useful format – network of NICE information
3. To improve digital formatting for easier access



**Easier, quicker  
access to the  
evidence**



## In summary...

- Implementation is complex
- Evidence that it is possible of change professional behaviour to improve quality of care
- No magic bullet – most interventions effective under some circumstance, none effective in all
- Suggests need for tailoring of interventions based on formal assessment of barriers
- Continuum of approaches

# NICE International

- Offer advice to government or government agencies on how to build capacity for assessing and interpreting evidence to inform health policy
- Offer advice on implementation
- Not for profit. Fee for service
- [www.nice.org.uk/niceinternational](http://www.nice.org.uk/niceinternational)

Thank you

---